

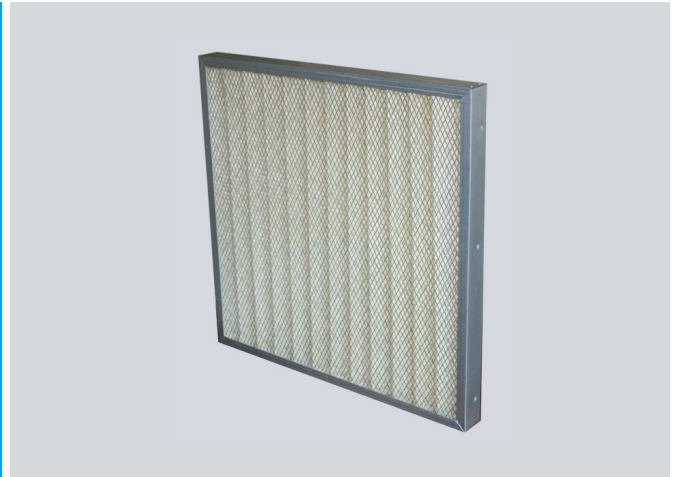
## Filtro Pleat HT - High Temperature Panel Filters

Filtro Pleat HT filters are designed as a pre filter operating at high temperatures. The filter operates up to 260° C, with lesser pressure drop and longer service life. Filters are classified with MERV7/G4/EU4 efficiency. They are made with a pleat distribution of 13 pleats per linear foot and are recommended to operate up to 3.17 m/s. These filters are available in 45mm (2") and 95mm (4") depths. Filter face area can be custom made in any dimensions and the maximum recommended pressure drop is 300 Pa.

### Filtrowin Models

#### Filtro Pleat HT

High Temperature Pleated Panel Filters  
Operates up to 260° C  
Available in 45mm and 95mm depths  
MERV7 / G4 / EU4 efficiency

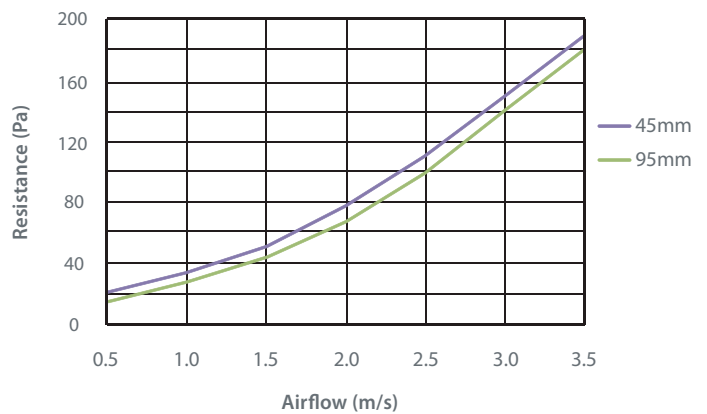


### Media Features and Technical Details

Filtro pleat HT filters are manufactured from continuous length superior quality single micro glass fiber media. The fiberglass media used in this filter is free from binders, moisture resistant and fire retardant. The uniform and closed pleat filter pack allows optimum media utilization and grants a high crossing surface to hold the very fine dusts. Filter frame used is aluminium. An expanded aluminium mesh support is provided in the air leaving side for backing. Stainless steel frames can be made as well. The pleated media pack is encapsulated into the filter frame with sealant which can withstand up to 260 DC.

- Rated Average Efficiency (%) : 30 - 35
- Rated Average Arrestance (%) : 95 - 97
- Final Resistance : 300 Pa

Filtro Pleat HT - Airflow vs. Initial Resistance



### Selection Chart ▼

Model	Nominal Size (Inches)	Actual Size (mm)	Pleats per linear foot	Rated Airflow (CMH)			Initial Resistance (Pa)		
				@1.5 m/s	@2.5 m/s	@3.17 m/s	@1.5 m/s	@2.5 m/s	@3.17 m/s
FPHT-24-2	12 x 24 x 2	290 x 595 x 45	13	1000	1700	2125	50	110	150
FPHT-65-2	16 x 25 x 2	395 x 625 x 45	13	1445	2380	2975	50	110	150
FPHT-84-2	18 x 24 x 2	457 x 595 x 45	13	1530	2550	3190	50	110	150
FPHT-00-2	20 x 20 x 2	495 x 495 x 45	13	1445	2380	2975	50	110	150
FPHT-04-2	20 x 24 x 2	495 x 595 x 45	13	1700	2805	3570	50	110	150
FPHT-05-2	20 x 25x 2	495 x 625 x 45	13	1785	2975	3700	50	110	150
FPHT-44-2	24 x 24x 2	595 x 595 x 45	13	2040	3400	4250	50	110	150
FPHT-24-4	12 x 24 x 4	290 x 595 x 95	11	1000	1700	2125	45	100	145
FPHT-65-4	16 x 25 x 4	395 x 625 x 95	11	1445	2380	2975	45	100	145
FPHT-84-4	18 x 24 x 4	457 x 595 x 95	11	1530	2550	3190	45	100	145
FPHT-00-4	20 x 20 x 4	495 x 495 x 95	11	1445	2380	2975	45	100	145
FPHT-04-4	20 x 24 x 4	495 x 595 x 95	11	1700	2805	3570	45	100	145
FPHT-05-4	20 x 25 x 4	495 x 625 x 95	11	1785	2975	3700	45	100	145
FPHT-44-4	24 x 24 x 4	595 x 595 x 95	11	2040	3400	4250	45	100	145

● Please contact factory for non-standard dimensions

All data are average indicative values with usual manufacturing and testing tolerances. We reserve the right to modify performance data without prior notices due to the constant technical improvement.

© Copyright: Every effort has been made to ensure that the information contained in this publication is accurate at the time of publishing. We assume no responsibility or liability for typographical errors or omissions or for any misinterpretation of the information within the publication and reserves the right to change without notice.

